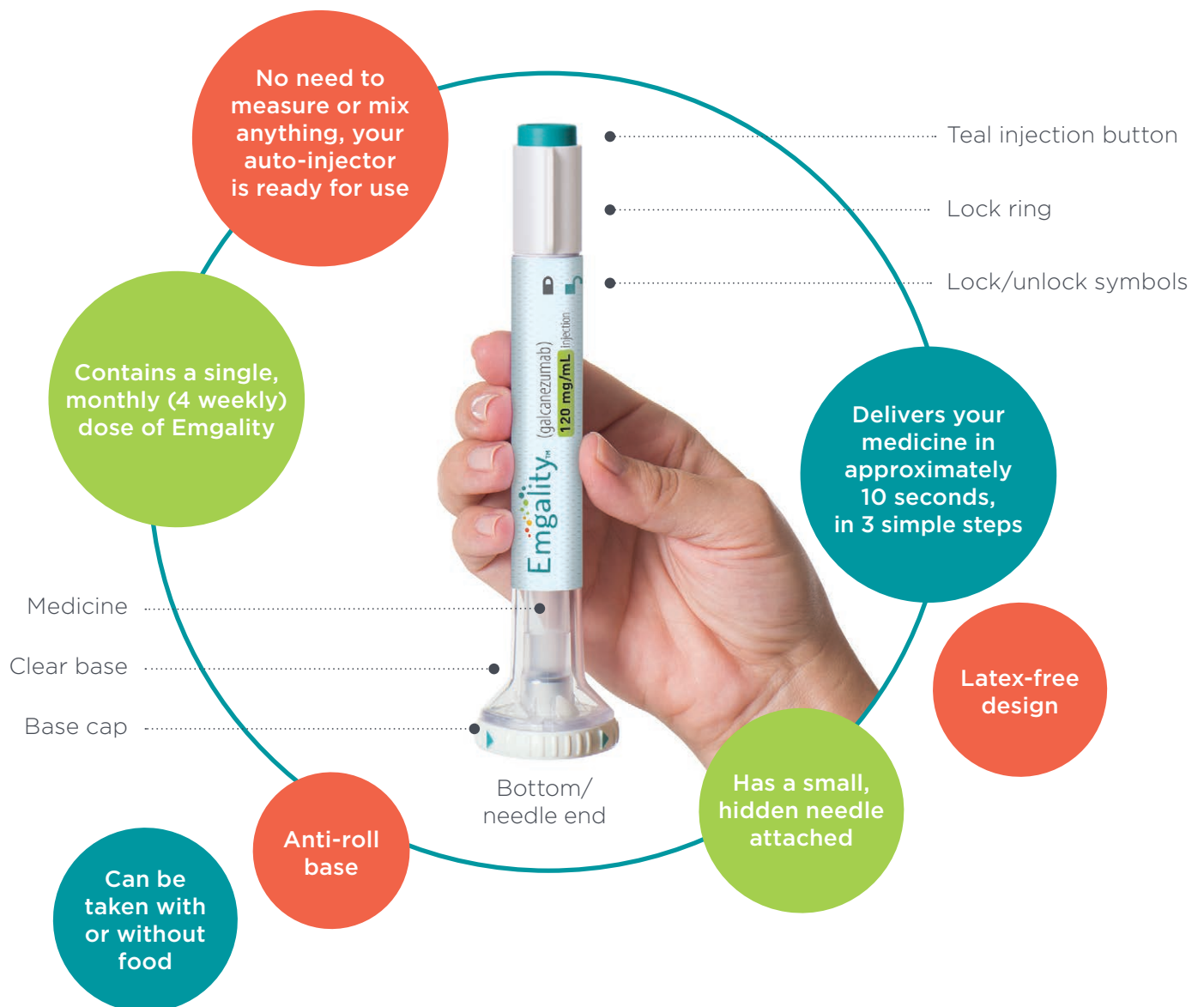


# Emgality comes in a ready-to-use auto-injector



## For patients prescribed Emgality

Emgality is used to prevent migraine in adult patients. Ask your doctor if Emgality is right for you. Use strictly as directed. Do not inject until after you have been shown how to inject Emgality by your healthcare professional.

# Three simple steps to use Emgality



## 1. Uncap the auto-injector

Twist off the cap and throw it away. Do not put the base cap back on, as this could damage the needle. Do not touch the needle.

» Your pen is heat sensitive, remember not to leave the pen out of the fridge for more than 7 days.

» Leave at room temperature for 30 minutes.



## 2. Place and unlock

Place and hold the clear base flat against the injection site then twist the top to unlock the auto-injector.

» Be careful not to press the teal button until after you remove the cap, otherwise you may damage the needle.

» Do not shake the pen before use.

» Take care not to drop the pen during handling.



## 3. Press and hold, look and listen

Press and hold the teal injection button. You will hear a loud click. Keep holding the clear base firmly against your skin. About 10 seconds after the first loud click, you will hear a second click. Check to see if the plunger is visible. This means your injection is complete.

» Make sure not to press the teal button until the base of the pen is flat against your skin and you are ready to inject.

» Wait until you hear the second click before removing the pen from your skin.

### Injection sites

- » Remember to change your injection site each month.
- » Your doctor may advise you select from the injection sites in this diagram.



abdomen



buttock



back of arm



thigh

If you need more information on how to use your Emgality auto-injector, please speak with your healthcare professional

**EMGALITY**<sup>®</sup> (galcanezumab 120mg/mL prefilled pen).

**PRESCRIPTION MEDICINE.** Emgality is not funded on the New Zealand Pharmaceutical Schedule.

You will need to pay the full cost of this medicine. Normal doctor's charges apply.

### Reporting side effects and product complaints

Emgality has risks and benefits. Please review the Consumer Medicine Information (CMI) before taking Emgality, available at [www.lilly.com.au/en/products](http://www.lilly.com.au/en/products) (Australia) or [www.medsafe.govt.nz/Consumers/cmi/e/emgality.pdf](http://www.medsafe.govt.nz/Consumers/cmi/e/emgality.pdf) (New Zealand).

Adverse events (side effects) and product complaints should be reported. If you are worried about a side effect while taking a Lilly medicine, please contact your doctor or other healthcare professional. To report an adverse event or a product complaint about a Lilly medicine, please call Lilly on: 1800 454 559 (Australia) or 0800 500 056 (New Zealand).

This information is brought to you by Lilly, the manufacturers of this medicine.



EMGALITY<sup>®</sup> is a registered trademark of Eli Lilly and Company. Eli Lilly Australia Pty Ltd, Level 9, 60 Margaret St, Sydney NSW 2000. ABN 39 000 233 992. Eli Lilly and Company (NZ) Limited. PO Box 109 197 Newmarket, New Zealand. NZBN 9429039560643. PP-GZ-AU-0261. TAPS: MR8449. Date of preparation: April 2023. FR10396.

**Emgality**<sup>®</sup>  
(galcanezumab) injection